



PDFelement Volume License Deployment Guide

For businesses where IT administrators need to deploy the software enterprise-wide, the PDFelement business team has prepared this deployment guide to better assist you in implementing PDFelement across your organization. We support the configuration to disable functions or features that might not meet your internal security policies or end-user rights (such as not having admin rights for your PC). A few examples of these include:

- Silent Installation where no user interaction is supported.
- Message Center doesn't display.
- Pop-up windows during the installation or uninstallation were tuned off.
- Default program of managing PDFelement is disabled.

If you have any questions or need more support from the PDFelement business team during the deployment process, please contact the PDFelement Business Support Team:

Our Website:

<http://www.pdfeditor.it>

Our Email:

info@pdfeditor.it

For PDFelement Server/Site License deployments please also include:

- Server Operating System
- Application Delivery method (Citrix, RDS, Streamed, Published App, Published Desktop, etc.)
- Size of farm
- Virtualization methods (if any)
- The dedicated URL of your site license installation pack

To ensure a quicker response, please include as much information as possible, including:

- Company Name
- The point of contact from PDFelement
- License Email(s)
- License Registration Code
- Application version
- Operating System(s)
- Anti-virus software used
- Deployment methods

Deploy PDFelement via Command Line

If you want to do a silent installation of PDFelement, deploy it using command line. Please refer to the below command:

```
"X:\PDFelement6 Install.exe" /LANG=ENG /VERYSILENT /NOPAGE /UNUPDATE /NONDEFAULT
```

The details of the command are listed below.

INSTALLATION APPLICATION COMMAND

| Command Code | Details |
|--------------|--|
| /DIR | Command format, /DIR="C:/x/y/PDFelement.exe" This is the directory of the installation application. |
| /EMAIL | This is the licensed email. It should be used with alongside the RegCode command when you want to activate the software after installation. |
| /LANG | Command format, /LANG=ENG This is the default language setting. English is the default setting. We support ENG, DEU, PTG, ESP, JPN, FRA, CHS, ITA,NLD . |
| /NONDEFAULT | Do not set PDFelement as the default programme for pdf documents. |
| /NOPAGE | Don't show successful installation page after installation. This is required when processing silent installation. |
| /REGCODE | Activation code command. This is required to be used together with email command for activating PDFelement. |
| /UNUPDATE | Turn off auto update/upgrade. Please make sure you delete OptionConfig file in AppData directory if you have installed the software before. |
| /VERYSILENT | Silent installation. This is required to run together with NoPage command. |

UNINSTALLATION APPLICATION COMMAND

| Command Code | Details |
|--------------|---|
| /VERYSILENT | Silent installation. This is required to run together with NoPage command. |
| /NOPAGE | Don't show successful uninstallation page after uninstallation. This is required when processing silent installation. |

Note: If the program is running during the silent installation process, there will be a popup notice about closing PDFelement. Please close the program and retry.

Activation Command Line

The command line activation will require a dedicated registration PETools. The download link is below
PETools Download Link

<http://download.wondershare.com/PETools.zip>

The Command is

```
PETools.exe /EMAIL <email> /REGCODE <code> /PID <pid>
```

COMMAND

| | Field | Comments |
|-------|-------------------|--|
| code | Registration Code | |
| email | License Email | For example, business@pdfwondershare.com |
| pid | Product ID | PDFelement Professional 2990 PDFelement Standard 2989 |

Deploy PDFelement Server

We have updated the Server Application with auto start and auto login features. This can solve issues when you restart the virtual server.

PDFelement 6 Professional Installation File :

<http://download.wondershare.com/pdfelementforbiz.exe>

PDFelement Server Installation File:

<http://download.wondershare.com/pdfelementserversetup20180418.exe>

1. Install PDFelement 6 Professional (leave it unregistered for now)
2. Install PDFelement Server.exe

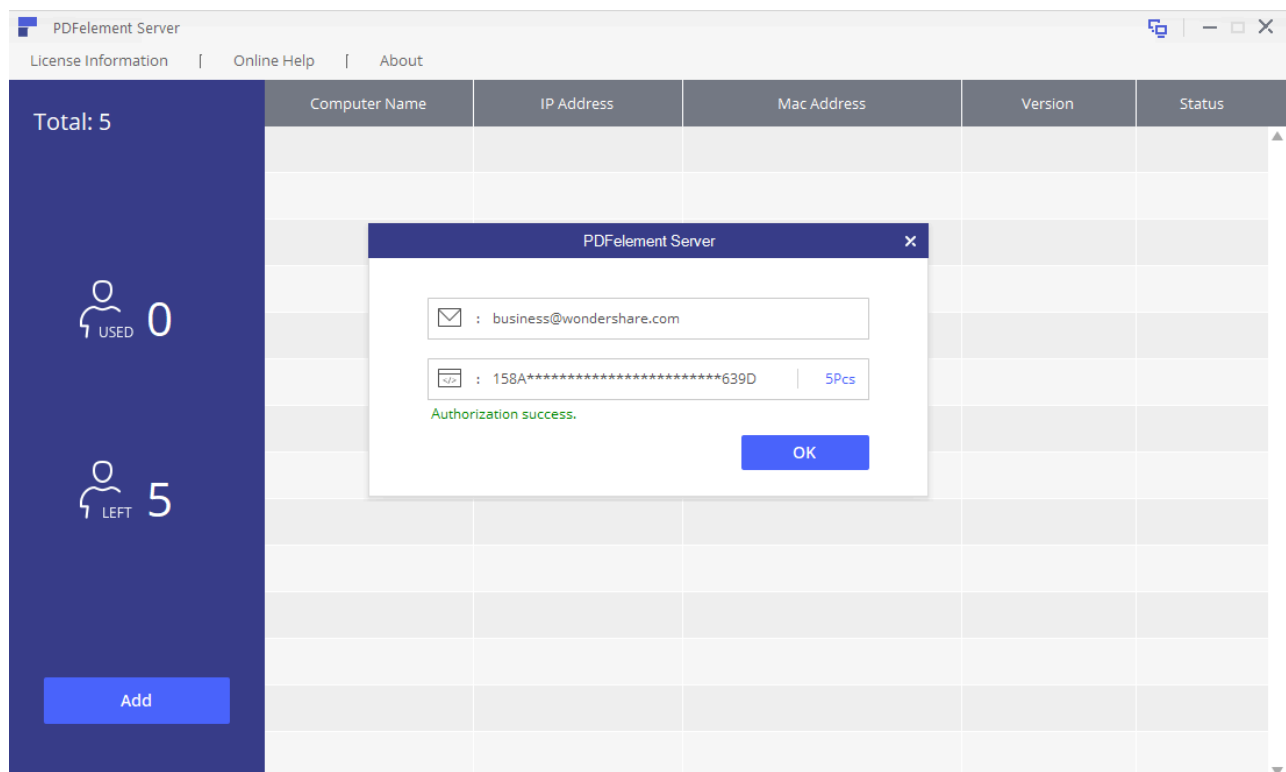
If you want to silently deploy it using command line, please refer to the below command:

`"X:\PDFelement6 Install.exe" /LANG=ENG /VERYSILENT /NOPAGE /UNUPDATE /NONDEFAULT`

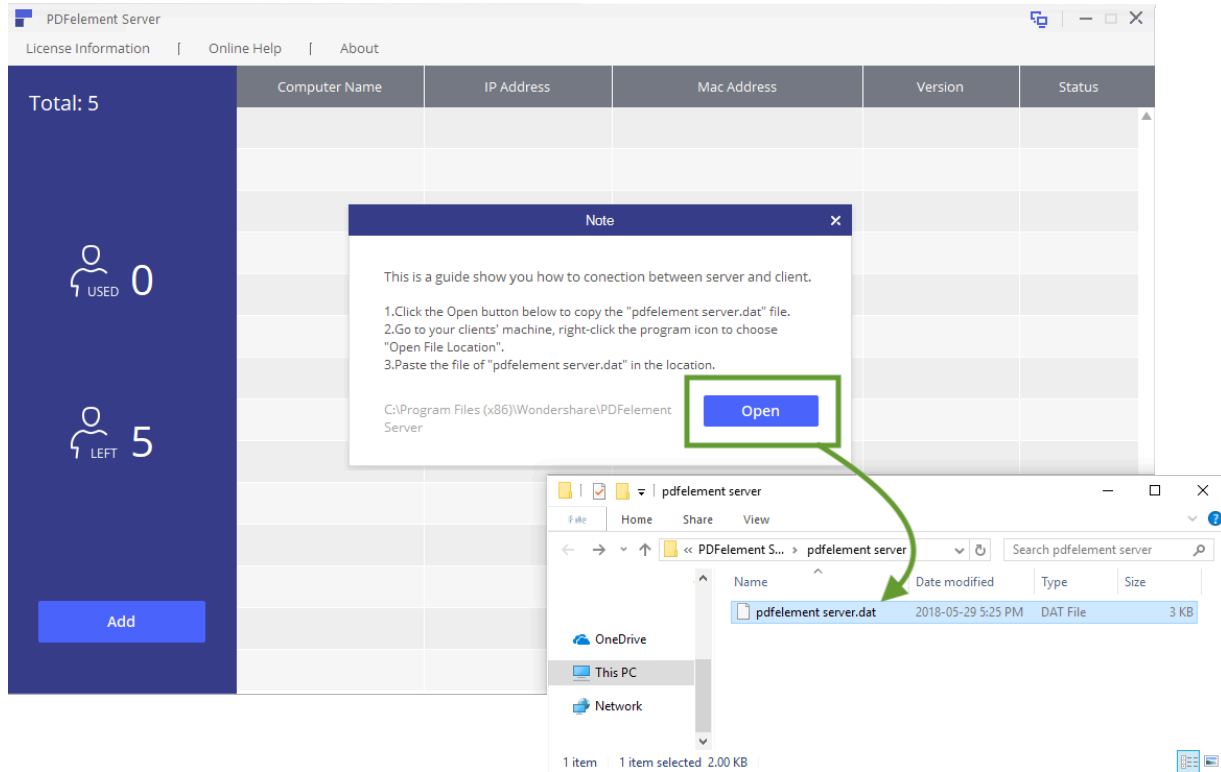
3. Launch PDFelement Server and enter the following license credentials:

Email address and 256 bit Activation Code

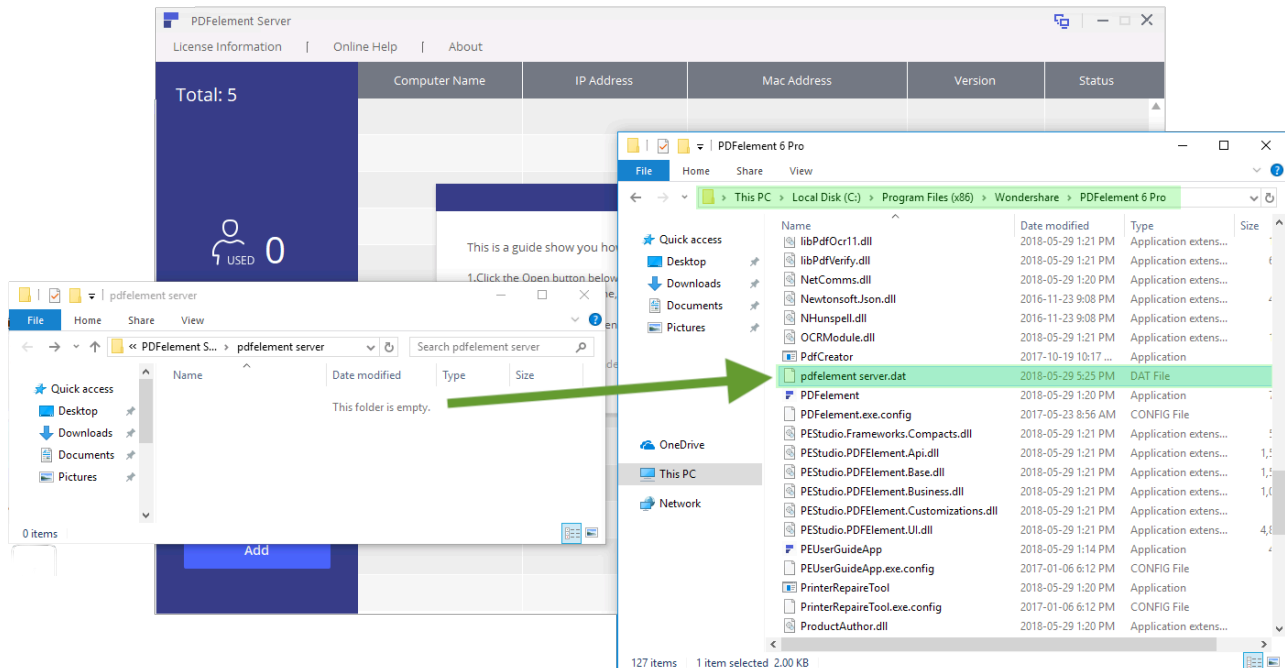
Proceed and you should see this confirmation:



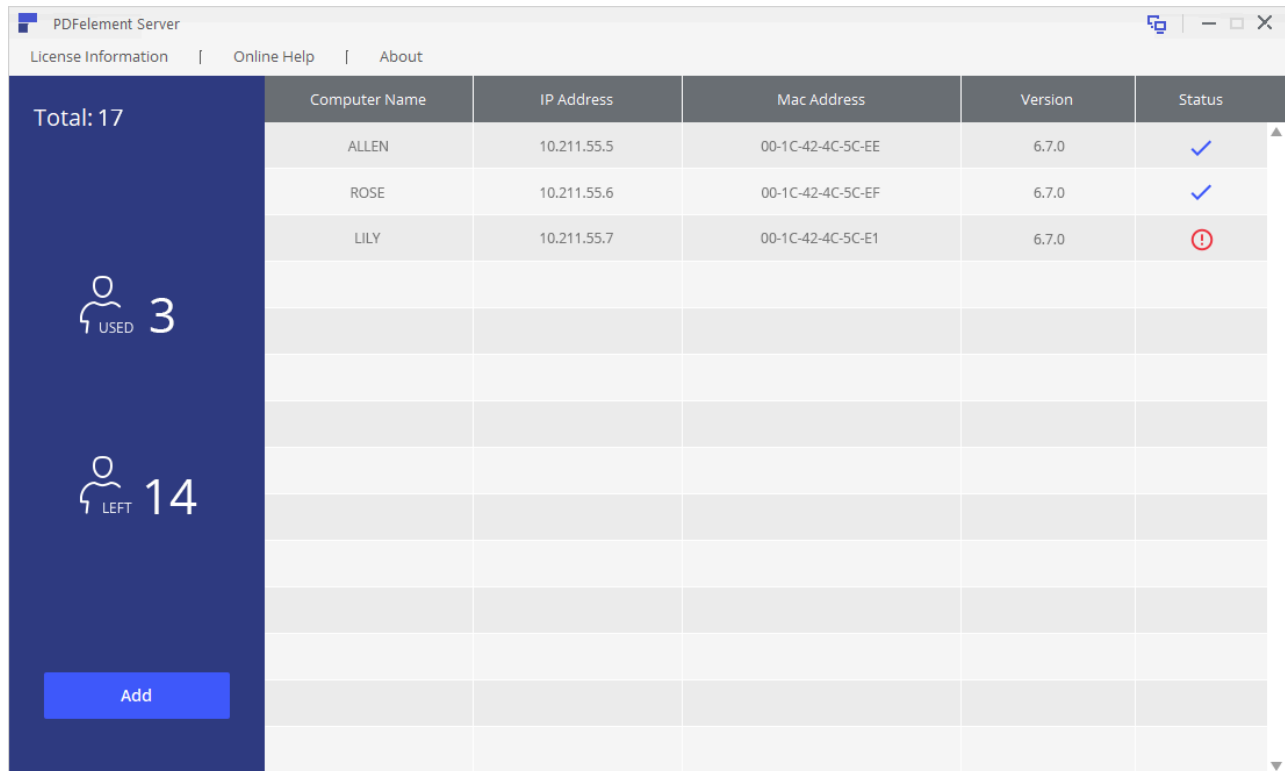
4. Click “OK” and in the next popup, click “Open” to reveal the important *.dat–file for the server tool



5. Copy & paste the file pdfelement server.dat into the PDFelement 6 Professional application folder (for example in C:\Program Files (x86)\Wondershare\PDFelement 6 Professional).





6. Close and restart PDFelement 6 Pro – it should start up again as registered. If you look at the “PDFelement Server” window, which runs in the background, you will see any PC that is currently using PDFelement in real time. (the # of “used” decreases as soon as a person stops using the software)



| Computer Name | IP Address | Mac Address | Version | Status |
|---------------|-------------|-------------------|---------|--------|
| ALLEN | 10.211.55.5 | 00-1C-42-4C-5C-EE | 6.7.0 | ✓ |
| ROSE | 10.211.55.6 | 00-1C-42-4C-5C-EF | 6.7.0 | ✓ |
| LILY | 10.211.55.7 | 00-1C-42-4C-5C-E1 | 6.7.0 | ⚠ |
| | | | | |
| | | | | |
| | | | | |
| | | | | |
| | | | | |
| | | | | |
| | | | | |
| | | | | |
| | | | | |
| | | | | |
| | | | | |
| | | | | |
| | | | | |
| | | | | |
| | | | | |

Total: 17

 USED 3

 LEFT 14

[Add](#)

Deploy PDFelement Site License

A site license is a type of software license that allows the IT administrators to install the software package on several computers, such as at a particular site (facility) or across a corporation.

If you purchased a site license from the PDFelement Business Team, we will prepare a dedicated URL and customized PDFelement installation pack for your organization. The license and registration code is integrated in the customized pack, and will be updated/ upgraded on a regular basis, depending on the software assurance term you purchased.

With the software download link, you will only need to download and install it. No activation process is needed.

Frequently Asked Questions

1. Is your license based on User/Account/Device?

The license authorization of PDFelement is based on Device ID. It is a combination of the main hardware of the PC, such as CPU registration information, and the hard-drive disk partitioning information. This means your activation is bound to the device it has been activated on. If you are trying to determine whether the Device ID has been changed after a hardware upgrade or re-installation of the computer OS, note that as long as the CPU, Hard-drive, and the partition settings for the hard-drive remain the same, the Device ID will remain the same. If you require assistance in reactivating the software on a new device, you may reach out to our PDFelement Community or Customer Support team.

2. Can a device have different Device IDs, and how can I check my Device ID? Will my Device ID change if I create a new account?

PDFelement determines your Device ID based on hardware component IDs. Therefore it will only change if you undertake substantial hardware changes on your computer. A new user account also requires activation, as it is treated as another user of the product even if the user logs in on the same physical workstation.

3. How can I unregister current software with a new license email and license code?

Open the software, go to Help, then License Information. Press **CTRL+Shift+F12**, and click Unregister in the top left corner. For volume license users, you can also use **PETools.exe** to batch register the software with the new license code.

4. We are in the process of preparing for PDFelement and need your assistance in obtaining information for our IT security team. Which site(s) are accessed during installation/deployment, and which URL does the "Check for updates" button link to?

During the installation, as well as when checking for updates, PDFelement connects to the site <http://cbs.wondershare.com/>. In fact, <http://cbs.wondershare.com/> is the only designated site domain that is used to communicate with clients. It is mainly for the purposes of license verification and processing requests, such as visiting the PDFelement community.

5. I want to program the update frequency into the automated installation. Where is the registry key (config file) that determines the update frequency in the Preferences menu?

Go to `%appdata%/Wondershare/PDFelement 6 Pro/Configs/optionConfig.config` and change the number value under `<UpdatePeriod>1</UpdatePeriod>` to your desired update cycle. Every day = 1, Every week = 7, Every month = 30, Every quarter = 120, and Every year = 365. Turn off = 0.